



A Project by:



Site Add: Blumen, Hazari Baug, LBS Marg, Behind Cipla, Vikhroli (W).

+91 7400155500/7400166600/7400299900/7400499900

info@dotomrealty.com dotomrealty.com/Blumen

MahaRERA REGISTRATION NUMBER # P51800013365



Disclaimer: The specification features, images and other details herein are only indicative. Furniture, Fixtures, Fittings are not part of the project, those images used here are just for representative purpose. The promoters/developer reserve the right to change any or all of these specifications, features, images or other details in the interest of the continuing improvement and development without prior intimation or obligation. This document does not constitute any offer and/or contract of any nature.

The Blossoming Of Excellence

Blumen, meaning flowers in German, is a majestic blossoming of a regal lifestyle at Vikhroli West, Mumbai. It transcends the average and traverses the excellence of grand living in the most majestic sense.

Garlanding The Majestic

With homes that embraces the essence of daybreak with the delight of sunset, it garlands awe-inspiring moments & scripts pristine memories.

The Fragrance Of Splendour

With captivating fragrances bringing together heavenly senses that comforts and astounds. Blumen is nestled amidst thriving serenity, spotlighting the grandeur conceived by inspiring innovation and spirited vision.




blumen
 An Elite Lifestyle

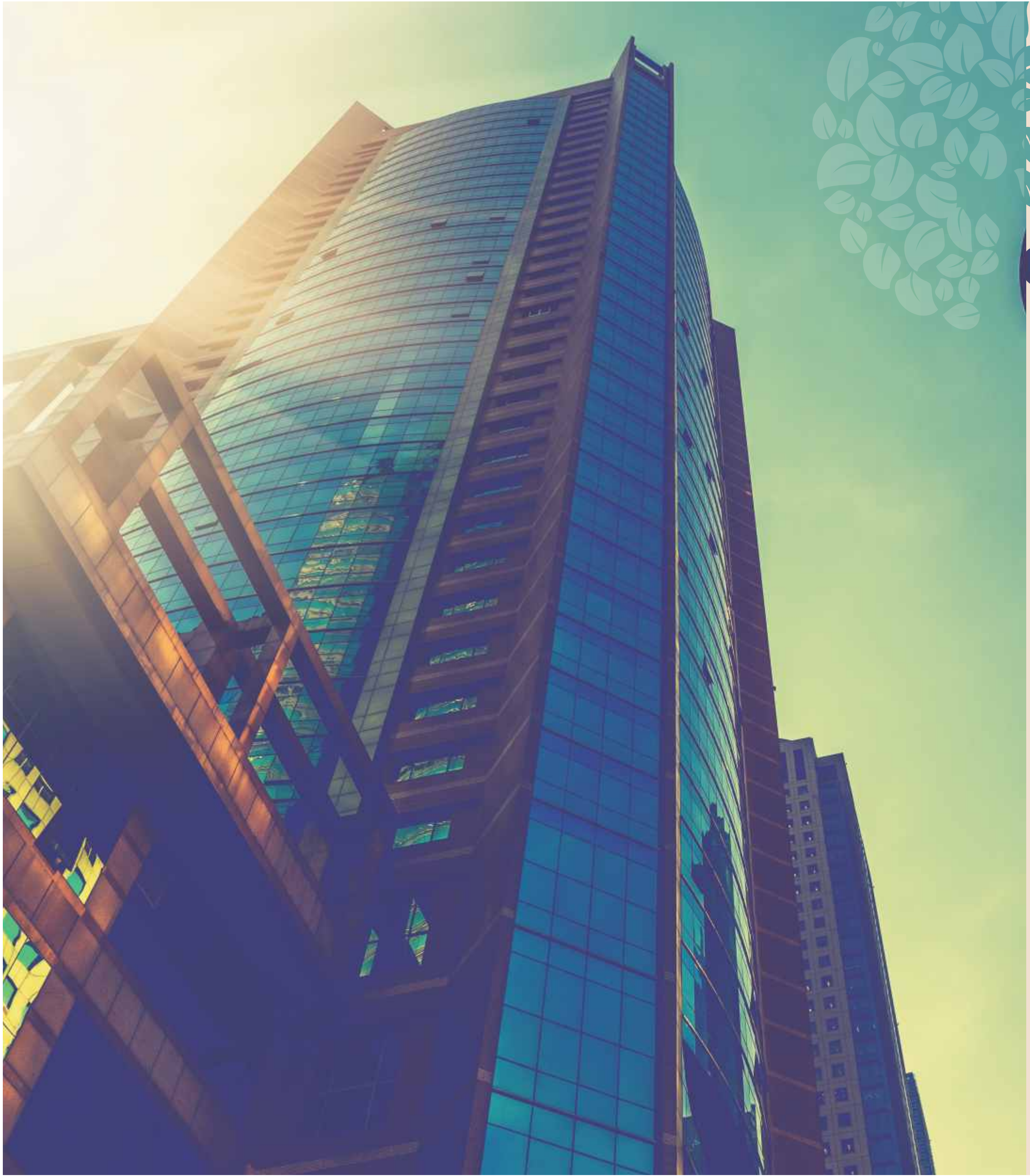
Mesmerising Luxury

With grandiose 1, 2, 3 & 4BHK homes with an option for 'Jodi Flats,' Blumen is the pinnacle of elite living, right at the epicentre of Mumbai's hub, Vikhroli West, Mumbai, just 2 mins from Vikhroli station, right off LBS Marg. Blumen is set to be the landmark that espouses wonder and covetousness.

Project Hallmarks

- 4 Majestic Towers of 22 Storey
- Unobstructed View of Western Mountain Greenery and Eastern Creek
- Magnificent Jain Temple View from Residential Tower
- A Stone's Throw Away from Vikhroli Station and LBS Road
- Designer Façade with LED Lighting
- Health Center with 8500 Sq. Ft. Podium Amenities
- Double Height Entrance Lobby with Concierge Desk & Lounge
- Advanced Security with 24x7 CCTV Surveillance





A Project by:



DOTOM Realty, synonymous with innovative craftsmanship & decorated professionalism, has carved out a niche for itself, offering the finest living experiences in the city of Mumbai with distinguish, traversing over two decades.

Guided and lead by the visionary leadership of architectural stalwart Ar. Manoj Vishwakarma and in association with Mr. Devendra Pandey, DOTOM Realty has beautifully added to the city's skyline through their peerless pedigree and unparalleled dedication to the best.



The Ambit group's leadership comes from its industry-best senior personnel that gives it a distinctive edge over the industry. In a short span of time, the group has become one of the key names in the real-estate industry.

Our focus is on creating a symbiotic balance of interests and delivering benefits to all stakeholders in every project - be it investors, customers, suppliers, owners or rehabilitated tenants. Complete transparency in all our dealings is more our moral credo than just a business policy.



Dazzling Living Room

Dazzle in the invigorating grandeur of chic living rooms custom-curated to awe and soothe.



Opulent Bedroom

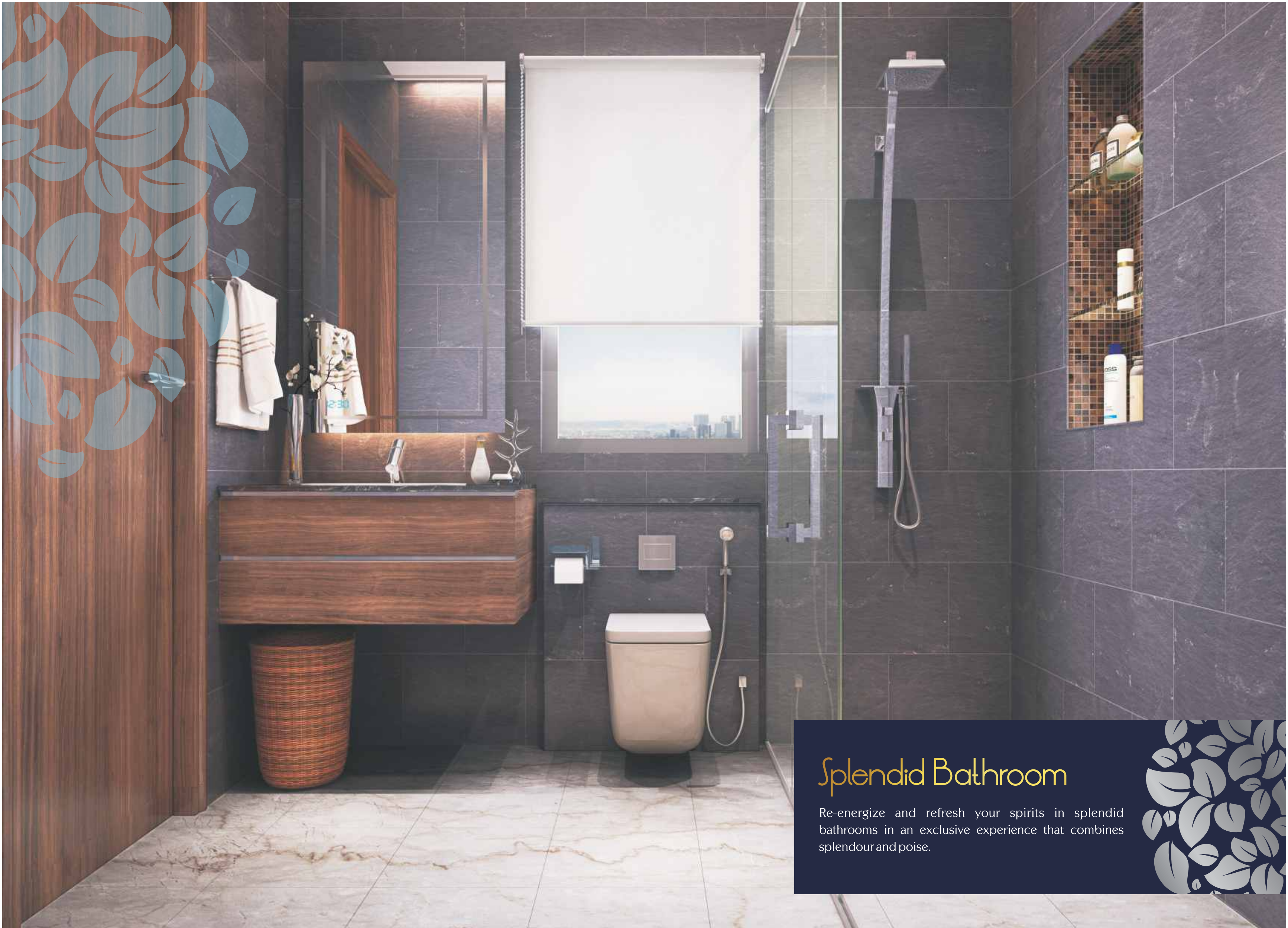
Rejuvenate and recuperate your senses in the opulence of pristine bedrooms with a culmination of charm and grace.



Exquisite Kitchen

Flavour your happiness in a gourmet spread of exquisite kitchens that both please and fulfil to perfection.





Splendid Bathroom

Re-energize and refresh your spirits in splendid bathrooms in an exclusive experience that combines splendour and poise.



Utopia – Flowering Happiness & Memories

A Rooftop Abode Of Heavenly Delights

A place where happiness is heightened and memories highlighted with utopian spaces to invigorate the sense of great living where every moment is treasured and every joy multiplied.

- 8500 Sq. Ft. of Sky Landscaping and Indulgences
- Sky Garden with Designer Plantations
- Sky Lounge with Luxury Sit-outs
- Sky Gazebos & Cabanas
- Sky Walkways and Acupressure Path
- Sky Cabana Café



Well-Planned Tower Features & Facilities

- Designer Façade with LED Lighting
- Double Height Entrance Lobby with Concierge Desk & Lounge
- 24x7 Manned Security and CCTV Surveillance
- Multilevel Vehicle Parking Space

Common Amenities & Specifications

- Wi-fi Enabled Common Area
- Well-designed Lift Lobbies & High-speed Elevators
- 24 Hours Power Backup for Common Areas
- Provision for Piped Gas Connection
- Premium Fittings & Fixtures in Every Apartment
- Superior Quality Paints and External & Internal Walls
- Branded CP Fittings

Internal Amenities for Apartments

- 4 x 4 Vitrified Tiles
- Powder Coated Aluminium Windows
- LED Light Fittings for Power Saving
- Video Door Phone Intercom Facility

Kitchen

- Granite Platform with Nirali or Equivalent Make Sink
- Provision for Water Purifier in Kitchen
- Provision for Gas Connection

Bathroom

- Roca/Toto Sanitary Fittings or Similar Make
- Grohe C. P. Fittings or Similar Make
- Mirrors in All Bathrooms



Eden – Idealistic Delight of Well-being



Eden – 8500 Sq.Ft. Podium for Recreation and Wellness

- Vehicle Free Landscaped Podium Garden
- Ultra-Modern Kids' Play Area
- Refreshing Swimming Pool
- Fully Equipped Hi-Tech Gymnasium
- Multi-Court to Accommodate Tennis, Badminton & Basketball
- Well Designed Jogging Track
- Yoga & Meditation Gazebos

A Haven Of Comforts

A personification of luxury and sophistication, Blumen is an amalgamation of artistic wonders and practical prudence, making for an ideal home where beautiful lives thrive in brilliance. Sculpted in 4 glorious towers with four magnificent wings, it is a haven of imperious marvel.

Typical Floor Plan (Wing - A)

Typical Floor Plan (Wing - B)



FLAT NO	TYPE	CARPET AREA in Sqft	ALLIED AREA in Sqft
1	2 BHK	556	39
2	2 BHK	603	41
3	2 BHK	603	41
4	2 BHK	555	49

FLAT NO	TYPE	CARPET AREA in Sqft	ALLIED AREA in Sqft
1	1 BHK	383	36
2	1 BHK	382	36
3	1 BHK	383	36
4	1 BHK	383	36

2 BHK



1 BHK



Jodi Option (Wing - A)

Jodi Option (Wing - B)



3 & 1/2 BHK



2 & 1/2 BHK



VIKHROLI

CONNECTIVITY & CONVENIENCE



Why Vikhroli?

Vikhroli, one of the most prominent suburbs in Mumbai, is a seamless coalescence of prudent progress and nature's embrace. Vikhroli is at the focal point of luxurious living and practical considerations, making it the ideal place to call home. Its scenic beauty spans the stunning development on one side with the stark enchantment of captivating mountains, mangroves & creeks on the other. The Eastern Express Highway connects Vikhroli to Thane, Dadar, Chembur and Vashi. It is also well connected by L.B.S. Marg on its western part to Bandra, Jogeshwari and other western suburbs to name a few.

Proposed & Approved Projects By Government:

- Metro - 4 spanning Wadala to Kalyan via Vikhroli - Kanjurmarg to Thane
- Metro - 5 connecting Thane-Bhiwandi-Kalyan
- Metro - 6 between Jogeshwari to Kanjurmarg via Vikhroli

(Received all approval to begin construction. It's the second important route linking West to Central Mumbai after Metro - 1, i.e. Ghatkopar to Versova)



CHANGING THE SKYLINE OF MUMBAI

www.dotomrealty.com

Our Hallmarks

Credible experience team of professional promoters.

Approx. 1.5 million Sq.ft. of proposed development.

Approx. 1.5 million Sq.ft. of ongoing development with syndicate partners.



2, 3 & 4 BHK
Luxurious Apartments

MahaRERA Registration No.
P50500004568

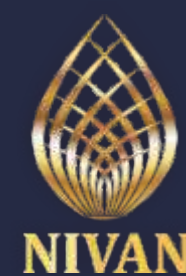
Borivali (W).



1 & 2.5 BHK
Budgeted Residences

MahaRERA Registration No.
P51800008691

Borivali (E).



2, 3 & 4 BHK
Apartments

MahaRERA Registration No.
P51800011423

Khar (W).



2 & 4 BHK
Super Luxurious Apartments

MahaRERA Registration No.
P51800011423

Matunga (E).



1 & 2 BHK Flats

MahaRERA Registration No.
P51800008441

Borivali (E).